



MOTOROLA
SOLUTIONS

UNIFIED TEAM COMMUNICATIONS FOR TOMORROW'S DIGITAL PLANT

2017 Manufacturing Communications Survey

500+ MANUFACTURERS FROM 47 STATES

78% OF MANUFACTURERS ARE USING MULTIPLE DEVICES TO COMMUNICATE



Smartphone
78%



Landline
52%



Two-way radio
67%



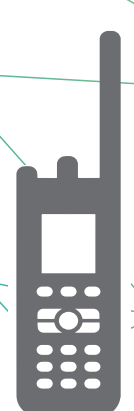
Overhead paging system
32%



PC/Laptop
66%



Tablet
27%



45%

use two-way radio as primary form of communication, UP 13% FROM 2015

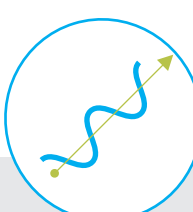
TOP 3 CITED BENEFITS FROM USING TWO-WAY RADIOS:



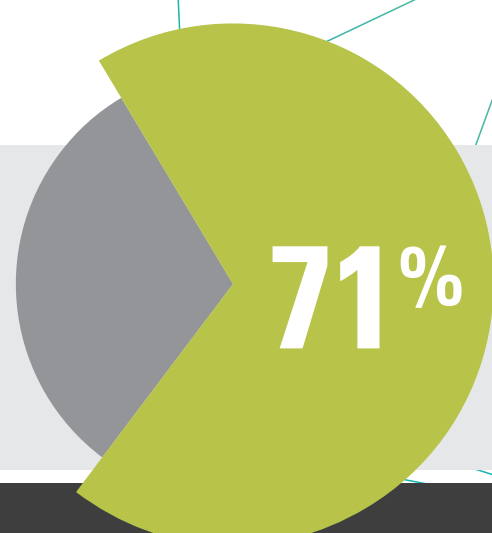
1. Resolving an emergency quickly



2. Boosting efficiency



3. Making decisions faster with real-time data



71% SAID IT WAS VERY IMPORTANT/IMPORTANT TO CONNECT ALL COMMUNICATION DEVICES

TOP 3 BENEFITS THEY STATED FOR CONNECTING ALL DEVICES:

#1 Resolve problems with greater safety and efficiency

#2 Seamless, instant team communications from any location or device

#3 Rapid response to emergency situations for worker safety

87% interested in voice and data integration, UP 29% FROM 2015

By connecting all their devices, 57% predict they'd reduce downtime by 10-30%

ASIDE FROM VOICE, MANUFACTURERS WANT THE FOLLOWING COMMUNICATION CAPABILITIES:



Text messaging & alerting



Real-time plant floor messaging between people and equipment



GPS location tracking



unsure what the Industrial Internet of Things is

39%

WHEN ASKED ABOUT THE INDUSTRIAL INTERNET OF THINGS (IIOT)

have implemented or have plans to implement IIOT solutions

25%

33%

are not or do not have plans to implement IIOT solutions



DOWNLOAD THE 2017 MANUFACTURING COMMUNICATIONS SURVEY REPORT AND GET ALL THE STATS.



MOTOROLA
SOLUTIONS

Motorola Solutions, Inc. 500 W. Monroe Street Chicago, IL 60661 U.S.A. 800-367-2346 motorolasolutions.com

MOTOROLA, MOTO, MOTOROLA SOLUTIONS and the Stylized M Logo are trademarks or registered trademarks of Motorola Trademark Holdings, LLC and are used under license. All other trademarks are the property of their respective owners. © 2017 Motorola Solutions, Inc. All rights reserved.